

## Coke - Legacy



### Coke:

Legacy Fountain – Approval to resume use of a self-serve Legacy fountain should come from your local health authority. Please follow COVID-19 Comeback Social Distancing protocols.

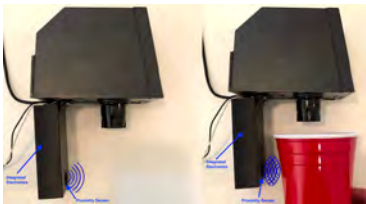
To our knowledge, all legacy and traditional Coke fountains are equipped with the sani-levers (pictured on the left), where the guest pushes their cup against the lever for both ice and Coke products. If you have a Coke fountain with push buttons, please contact your Coke bottler.

**For Self-Serve** - Each guest should obtain a cup, lid and wrapped straw from a team member. If you offer refills, the guest a new cup each time. The machine should be sanitized as necessary throughout the day.

**For Assisted Serve** - Continue normal service with the additional of handing the wrapped straw to the guest. Do not use a dispenser. All refills should receive new cups.

**Coke Legacy Contactless Solutions:** A sensor system is in development by both Coke and Valid Fill to enable contactless pouring from a legacy fountain. These solutions are expected to be available this summer.

## Coke – Legacy – Contactless Innovation



- Hands free operation by placing cup near sensor
- Low cost, ~15/ea. unit price via Coca-Cola Parts
- Retrofittable, 15mins or less per valve
- Works with LEV, SFV-1 and FFV
- Available in Aug-Sept
- Your Coca-Cola bottler can order this for you

[Click image to play operational video](#)

## Coke – Legacy – Contactless Innovation

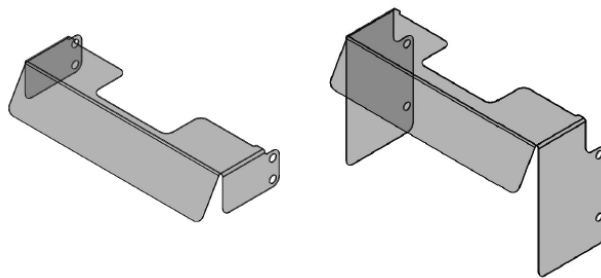


### Pure Touchless by ValidFill:

- Hands-free operation: simply break the plane between the sensors with a finger, cell phone, card, etc.
- Installs in only a few minutes. No special tools needed to install
- Replaces existing LEV valve covers
- Utilize with or without ValidFill Control Technology
- Starting at \$25 per valve, one-time charge
- Available in late July
- Patent pending
- Contact: [Tmccann@validfill.com](mailto:Tmccann@validfill.com)

Please note pricing for either solution is per valve and both are installed by the operator. Also note, the ValidFill Solution may not work on all Coke Fountains

## Coke – Legacy – Other Options



### Valve Guards

- Valve guards are designed to discourage guests from touching the valves that dispense Coke products.
- Valve guard solutions are in the authorization process and will be available in Coke Parts once approved – TBD end of June.

# COVID-COMEBACK PLANNING: Fountain Beverages

## Coke - Freestyle



### Short Term Use:

Approval to resume use of a self-serve Freestyle should come from your local health authority. Please follow COVID-19 Comeback Social Distancing protocols.

To help you prepare for the use of your Freestyle, you can order a kit with two decals from your bottler or Coke representative. One decal notes that wipes are available for use to make a selection and the other notes that hand sanitizer is available for use after the guest makes their selection.

We are advising against re-positioning the Freestyle to make it assisted serve.



## Coke – Freestyle Contactless Innovation



Click image to play operational video

### Timing

- Currently in test
- Aug rollout to 7000/7100/9100 machines

### SmartPhonePourProcess



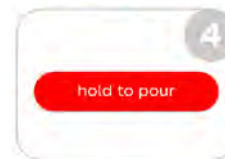
Push lever for ice & place cup in dispenser



Scan QR code on dispenser using your camera



Select desired brand & drink



Press "hold to pour" button & release it to stop

## Delivering Coke Fountain Beverages



### Delivery On the Go:

A team member pours the beverage following all food safety guidelines. They put the lid on the cup and place Coke's tamper-resistant cup label across the lid and partially down the sides. Special care must be taken during the delivery to avoid spilling or dropping the fountain drink.

Order at [coca-cola.dotit.com](http://coca-cola.dotit.com) or email [coca-cola@dotit.com](mailto:coca-cola@dotit.com)  
\$18.65/500 stickers



Coca-Cola® Tamper-Resistant Labels  
1" X 3"



Coca-Cola® Tamper-Resistant Cup Labels  
1.25" X 8"



Coca-Cola® Tamper-Resistant Open Dome Lid Labels  
1.5" X 9"

## Carriers for Fountain



Black Nylon Hot/Cold Beverage Delivery Bag  
Hubert Number 10879 \$80.94



Kraft 12-32 oz 4 Cup Carrier  
Hubert Number 76071 Case Pack: 200 \$79.68

Continue to use the Delivery on the Go tamper-resistant label for the outer bag and follow the standards and guidelines set forth in the Delivery on the Go manager's guide.

## Pepsi Legacy Fountain



### Pepsi:

**Legacy Fountain** – Approval to resume use of a self-serve Legacy fountain should come from your local health authority. Please follow your segment’s COVID-19 Social Distancing protocols.

**Legacy Fountains** – There are two possible configurations of a Pepsi legacy. One fountain has “push buttons and one has sani-levers. If your push button fountain is self-serve, please contact your local Pepsi rep to switch to sani-levers. This should be done at no charge. Your ice dispenser should also be a sani-lever.

**For Self-Serve** - Each guest should obtain a cup, lid and wrapped straw from a team member. If you offer refills, the guest will need a new cup each time. The machine should be sanitized as necessary throughout the day.

**For Assisted Serve** - Continue normal service with the additional of handing the wrapped straw to the guest. Do not use a dispenser. All refills receive new cups.

## Fountain Guard



Developed to provide hygienic protection throughout your guest’s beverage dispensing experience.

Designed to protect your valve, lever, and dispensed beverages from contamination throughout frequent daily use.

### Features

- NSF approved
- Retrofits easily with existing beverage dispensers
- Quick & simple installation
  - No tools needed
- Easily removable for cleaning
- Compatible with most beverage dispenser brands on the market
- Durable. made with heavy grade clear plastic
- Available with side guards for extra protection

## Pepsi Spire



### Short Term Use:

Approval to resume use of a self-serve Spire should come from your local health authority. Please follow COVID-19 Comeback Social Distancing protocols.

For self-serve Spire where the health department has approved those options - please hand the guest a cup, individually wrapped straw and lid. Place hand sanitizer and/or sanitizing wipes near the machine and have a team member ready to sanitize the machine as necessary.

If you wish to turn your Spire to assisted serve, please contact your Pepsi bottler.

## Delivering Pepsi Fountain Beverages



**Tamper Evident Tape**  
**Edward Don #1188448**  
**\$14.55 for 250 labels (\$.0582 per label)**

### Delivery On the Go:

A team member pours the beverage following all food safety guidelines. They put the lid on the cup and place Coke's tamper-resistant cup label across the lid and partially down the sides. Special care must be taken during the delivery to avoid spilling or dropping the fountain drink.

**Carriers for Fountain**



Black Nylon Hot/Cold Beverage Delivery Bag  
Hubert Number 10879 \$80.94



Kraft 12-32 oz 4 Cup Carrier  
Hubert Number 76071 Case Pack: 200 \$79.68

Continue to use the Delivery on the Go tamper-resistant label for the outer bag and follow the standards and guidelines set forth in the Delivery on the Go manager's guide.

## Fountain FAQs

Updated 7/01/2020

As we reopen our business it is important to follow current FDA guidelines. Current FDA guidelines are to discontinue self-service salad bars and buffets until social distancing measures are lifted (FDA temporary guideline posted 3/17/2020). This guideline has led to many questions around cold beverage fountains.

As local regulatory/health authorities lift levels of restrictions, and you turn on your fountains, remember the onus of ensuring social distancing is on the operator. Make sure you have an attendant either serving fountain drinks or sanitizing all guest touch points. Also be sure that you have the proper social distancing signage in place.

### **I'm getting ready to reopen—can I turn on my fountain?**

If your fountain is assisted service, yes. Be sure that your team member is also putting the lid on the soft drink and handing the guest a pre-wrapped straw. Refillable cups are not permitted, and each time a guest returns for their disposable cup to be refilled, they should receive a new cup.

If your fountain soda is self-serve, it should remain off until your local health agency lifts self-serve guidelines or agrees to the plans that our beverage partners are designing.

### **I have a Coke Freestyle machine—am I paying the monthly fee?**

Coke has not charged any fees for April and May. If your machine is not in use, June fees will also be waived.

### **What should I do with my Freestyle?**

If you haven't already done so, shut the machine down using the guide. Leave the machine turned off but do not call for removal. The Coke Freestyle offer comes with a monthly fee and penalty for returning it before expiration.

Coke has a 3-stage approach to getting your Freestyle back up and running and keeping our guests comfortable.

- Short term: make a single-use disposable available - such as sanitizing wipes - for the guests to use as a disposable barrier. If a barrier is not readily available, an alcohol-based hand sanitizer that is at least 60% alcohol should be stationed near the dispenser. POS has been sent to each Freestyle location to explain the process to guests.
- Medium term: give guests a stylus to use (and keep) to make their selection – this step is only be taken if the contactless pour system fails.
- Long term: A contactless pouring solution that uses a smartphone and QR code is being tested. See the Freestyle section of this document for a video and more information.



## **Fountain FAQs**

**I have a Pepsi Spire machine – Can I return it?**

Please leave it off for the time being and watch for further announcements (addressed in the Pepsi section of this document).